



The world best
technology
and quality

THE WORLD BEST TECHNOLOGY AND QUALITY
SHINIL E&T
EXTRUSION TOOL



경기도 시흥시 시화벤처로 299 (3사 205호)
299, Sihwa venture-ro, Siheung-si, Gyeonggi-do, 15117, Rep. of KOREA
TEL: 82-31-432-1495 FAX: 82-31-432-1498
<http://www.shinilent.com> E-mail: shinilent@shinilent.com

Partnership!
Based on High Quality & Trust!

SHINIL E&T

EXTRUSION TOOL을 전문 생산하는 저희 신일이엔티(주)는 1989년 창업 이후 "하면 된다"라는 도전정신과 축적된 KNOW-HOW를 바탕으로 끊임 없는 연구개발을 통하여 최고의 품질과 기술혁신을 이루어 고객만족에 최선을 다하여 왔습니다.

앞으로도 기존 제품의 경쟁력 강화는 물론 고객중심적인 생각과 신뢰를 바탕으로 최고의 품질과 신속한 A/S를 제공하여 고객을 만족시키는 세계속의 신일이엔티(주)가 될 것을 약속 합니다

Our company, SHINIL E&T, specially producing Extrusion tools, we have been trying to offer the best service with technology innovation and best quality through constant research and development to satisfy our customers based on our challenging spirit "Nothing is Impossible" and accumulated Know-How since establishment in 1989.

We promise we will become global SHINIL E&T satisfying all customers through fast A/S based on trust of customers and thought about customer, also keep intensifying competitiveness of existing products.

Main Products

- Triple Cross Head(CCV, VCV)
- Fixed Centering Cross Head
- Manual Centering Cross Head
- Rubber, Silicon Cable Cross Head
- Special Head
- Fluoropolymer Cross Head
- Flat Cable Cross Head
- Straight Head(Tube)
- Rotating Head
- Extrusion Tool
- Optical Fiber Tool
- Cartridge
- Accessories



SHINIL E&T

- 전선 제조에 필요한 압출 금형 선두업체
Leading company extruding a mold needed in wire manufacture
- 우수한 품질 및 신속한 납기
Fast delivery and outstanding quality
- 첨단설비와 기술력 보유
Have latest equipment and technical skills
- 최고의 생산기술자 및 연구개발 엔지니어
Best production technician and research engineer
- 엄격한 품질관리 및 사후관리 A/S
Strict quality assurance and ex post facto management A/S

SUPPLY

성공을 공급합니다

신일이엔티(주)는 1989년 창업 이래 오늘날까지 전력과 통신산업 등 산업 전반에 걸쳐 동맥 역할을 하는 전선 제조에 필요한 압출 금형을 가장 현대적이고 첨단적인 설비와 풍부한 경험 및 기술력을 바탕으로 CROSS HEAD와 주변 관련 금형들을 국내는 물론 전세계에 공급하고 있는 동종업계 선두업체입니다. 당사는 최고의 정밀도를 요구하는 제품을 생산하는 생산 기술자부터, 향상된 제품 개발을 위한 연구개발 엔지니어, 그리고 엄격한 품질관리 및 사후관리 A/S까지 당사의 구성원들은 전선생산업체 및 기계 제조업체와의 긴밀한 협력을 통해 우수한 품질로 항상 고객과 함께하는 경영철학을 추구하여 왔습니다.

Shinil E&T, the leader of precision machining industry provides our customers tools made to their exact specifications at a competitive price, with reliable service and timely delivery. SHINIL E&T is a leading company that supplying extruding a mold needed in wire manufacture, Cross Head based on modern, latest equipment, sufficient experiences and technology till now since establishment in 1989. We have been seeking for management philosophy that always sticks with customers with production technician requires best accuracy, research engineer for product development, and strict quality assurance and ex post facto management A/S.

1990~

Sep. 1997 경기도 유망중소기업 선정
Selected as Promising Small & Medium Sized Enterprise (Gyeonggi Province)

1980~

May. 1989 신일다이소 설립
Shinil Dies is founded

2000~

Apr. 2000 고정과 조절겸용 Cross Head 특허획득
Obtained a patent for "Fixed and Adjustable Cross Head"

Jul. 2000 신공장 이전 및 신일이엔티 (주) 법인 전환
Moved the new Factory and convert corporation to "Shinil E&T Co., Ltd."

Mar. 2002 Cross Head 미국시장 진출
Exported a Cross Head to USA market

Jul. 2008 기술혁신기업 선정
Selected as Innovation Business Company

Sep. 2008 부품 소재 전문기업 선정(지식경제부)
Selected as A Enterprise Specializing in Parts Materials

2010~2022

Feb. 2010 Cross Head 유럽시장 진출
Exported a Cross Head to Europe market

Jul. 2010 MV용 VCV Triple Head 해외수출
Exported a VCV Triple Head for MV

May. 2011 ISO14001 취득 및 기업연구소 설립
Achievement ISO 14001 and Established Research center

Jun. 2012 벤처기업 지정
Certified as a Venture Enterprise

Jun. 2013 ISO 9001 취득
Achievement ISO 9001

Jul. 2014 신공장 신축 완료 및 이전
Completed the construction of New Factory and moved to new factory

Jan. 2016 와이어 방전가공 다이아몬드 가이드와 슈퍼드릴 가이드 생산 시작
Start production Diamond wire guide, Super drill guide and other consumable parts for Wire EDM

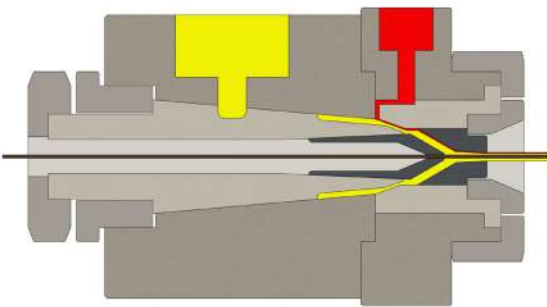
Sep. 2016 "The 7th Wire China 2016" 전시회 참가
Participated the exhibition "The 7th Wire China 2016"

Jul. 2017 신규개발된 기술을 적용하여 내구성이 향상된 제품 출시 및 특허출원
Released the product with increased durability which applied new developed technology and patent requested

Apr. 2018 SIMTOS 2018 전시회 참가
Participated "The 18th Seoul International Manufacturing Technology Show" at Kintex

May. 2021 표면조도 개선공정 개발 및 적용 EDM 와이어 가이드 글로벌 공급망 구축 완료
Developed surface roughness process and applied and complete global supply chain for EDM wire guide

CROSSHEAD SAF

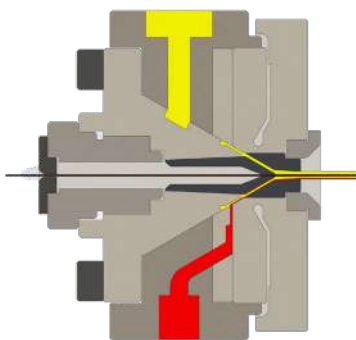


APPLICATION	
Single layer	
Single layer + Skin	
Single layer + Stripe	

Characteristics					
Crosshead size	07	14	18	30	50
Min Conductor Ø	0.2	0.5	0.5	3	5
Max Conductor Ø	5	10	13	25	45
Max Insulation Ø	7	14	18	30	50
Max tube die Ø	10	18	20	40	60
<ul style="list-style-type: none">•Insulation: Solid and stranded wires•Application: Telephone wires, Building wires, Automobile wire, Electronic cables, Energy cables, Power cables•Compound: PVC, PE, PUR, PBT•Centering: Fixed centering•Layer: Single layer/ Single layer + Skin or Stripe <p>FEATURE & STRENGTH</p> <ul style="list-style-type: none">- Distribution: Conical type cartridge- Simple structure and fixed center allows easy to clean and rapid assemble and disassemble.- With change of front body makes various choice of operation- Gum space: Axial die adjustment <p>OPTION</p> <ul style="list-style-type: none">- Connection: Connecting flanges any type of extruder- Bypass: Manual / Pneumatic- Breaker plate- Toolings: Hardened steel, Tungsten carbide, Diamond inserted- Accessories: Vacuum adapter					

Tools	
COMPRESSION	
SEMI-COMPRESSION	
TUBE	

CROSSHEAD SCF

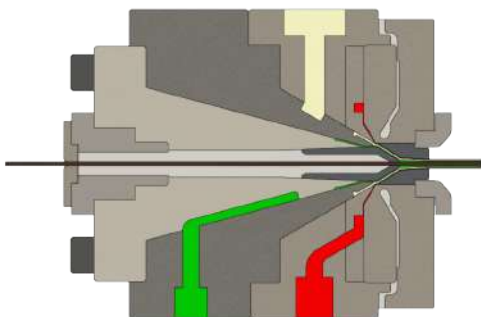


APPLICATION	
Single layer	
Single layer + Skin	
Single layer + Stripe	

Characteristics					
Crosshead size	05	07	14	25	35
Min Conductor Ø	0.2	0.2	0.5	3	5
Max Conductor Ø	2	5	10	14	25
Max Insulation Ø	4	7	14	25	35
Max tube die Ø	5	10	18	30	45
<ul style="list-style-type: none">•Insulation: Solid and stranded wires•Application: Telephone wires, Automotive wires, Electronic cables, LAN Cables, Optical fibers•Compound: PVC, PE, PUR, PA, PBT•Centering: Fixed centering / Mflex centering•Layer: Single layer/ Single layer + Skin or Stripe <p>FEATURE & STRENGTH</p> <ul style="list-style-type: none">- Distribution: Conical type cartridge- Simple structure and fixed center allows easy to clean and rapid assemble and disassemble.- With change of front body makes various choice of operation- Gum space: Axial die adjustment <p>OPTION</p> <ul style="list-style-type: none">- Connection: Connecting flanges any type of extruder- Bypass: Manual / Pneumatic- Breaker plate- Toolings: Hardened steel, Tungsten carbide, Diamond inserted- Accessories: Vacuum adapter					

Tools	
COMPRESSION	
SEMI-COMPRESSION	
TUBE	

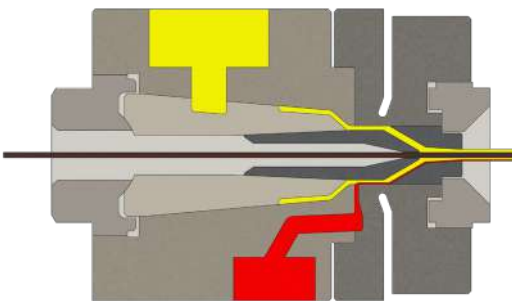
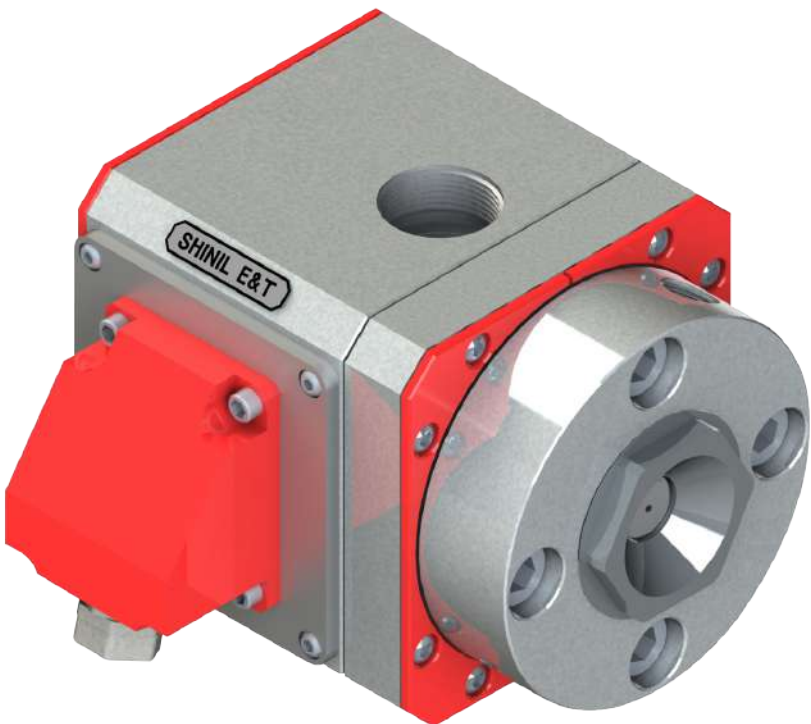
CROSSHEAD SCF-07 MF SFS





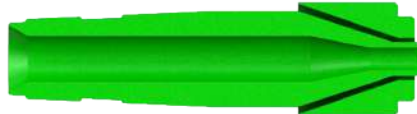
APPLICATION	
Dual layer (Foam+Skin)	
Dual layer (Skin+ Foam)	
Triple layer (Skin+Foam+Skin)	

Characteristics	Tools
<ul style="list-style-type: none">•Conductor : Min 0.2 ~ Max 4mm•Insulation: Max 7mm•Tube die diameter: Max 10mm•Application: LAN Cable, Small solid optical fiber•Compound: PVC, PE, PUR, PA,•Centering: Mflex centering•Layer: Dual layer (Foam+ Skin or Skin+ Foam) Triple layer(Skin+ Foam+ Skin) <p>FEATURE & STRENGTH</p> <ul style="list-style-type: none">- Distribution: 2 Conical type cartridge; mono flow easy to clean- Uniform and smooth flow, no stress, no shear in the melted compound.- With change of front body makes various choice of operation- Gum space: Axial die adjustment <p>OPTION</p> <ul style="list-style-type: none">- Connection: Connecting flanges any type of extruder- Bypass: Manual / Pneumatic- Breaker plate- Toolings: Hardened steel, Tungsten carbide, Diamond inserted- Accessories: Vacuum adapter	

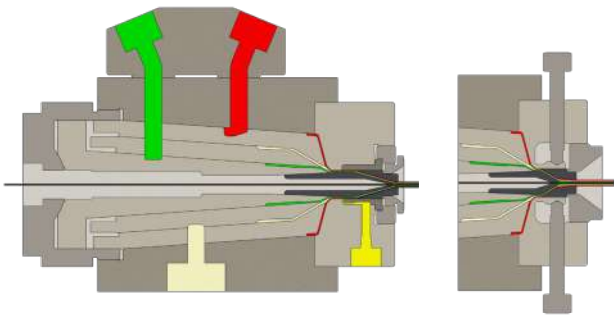
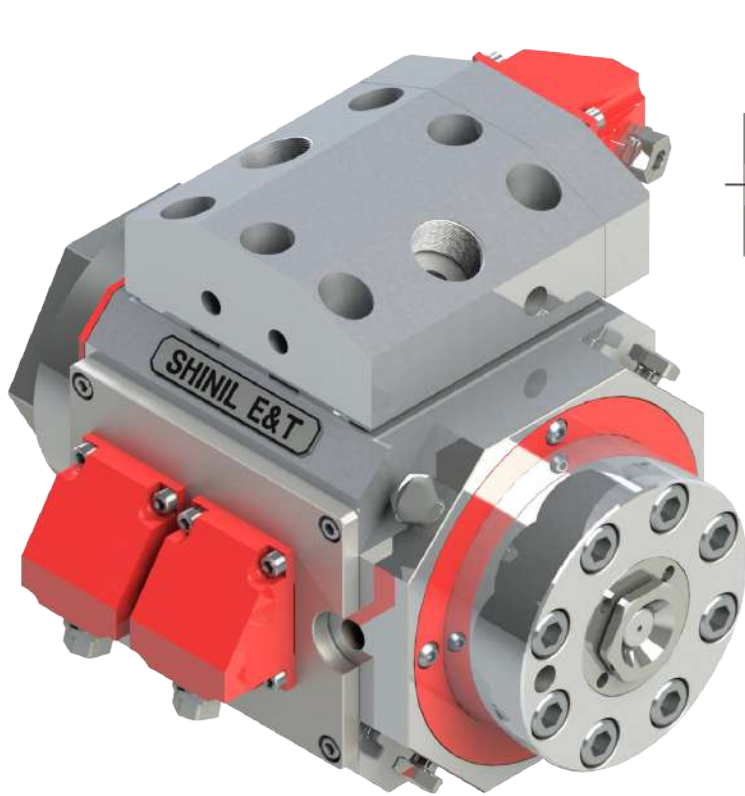
CROSSHEAD SDF



APPLICATION	
Single layer	
Single layer + Skin	
Single layer + Stripe	

Characteristics						Tools
Crosshead size	07	15	18	28	40	<div>COMPRESSION</div>  <div>SEMI-COMPRESSION</div>  <div>TUBE</div> 
Min Conductor Ø	0.2	0.2	0.5	3	3	
Max Conductor Ø	5	10	13	22	30	
Max Insulation Ø	7	15	18	28	40	
Max tube die Ø	10	18	20	35	50	
<ul style="list-style-type: none">•Insulation: Solid and stranded wires•Application: Building wires, Automotive wires, Jacketing Data cables, Foamed cables, LAN cables.•Compound: PVC, PE, PBT, PUR, PA•Centering: Fixed centering / Mflex centering•Layer: Single layer/ Single layer + Skin or Stripe <p>FEATURE & STRENGTH</p> <ul style="list-style-type: none">- Distribution: Conical type cartridge- Simple structure and fixed center allows easy to clean and rapid assemble and disassemble.- With change of front body makes various choice of operation- Gum space: Axial die adjustment <p>OPTION</p> <ul style="list-style-type: none">- Connection: Connecting flanges any type of extruder- Bypass: Manual / Pneumatic- Breaker plate- Toolings: Hardened steel, Tungsten carbide, Diamond inserted- Accessories: Vacuum adapter						

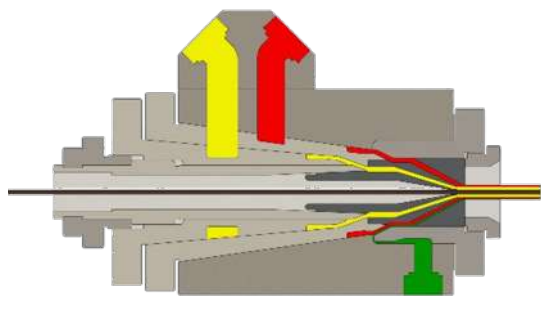
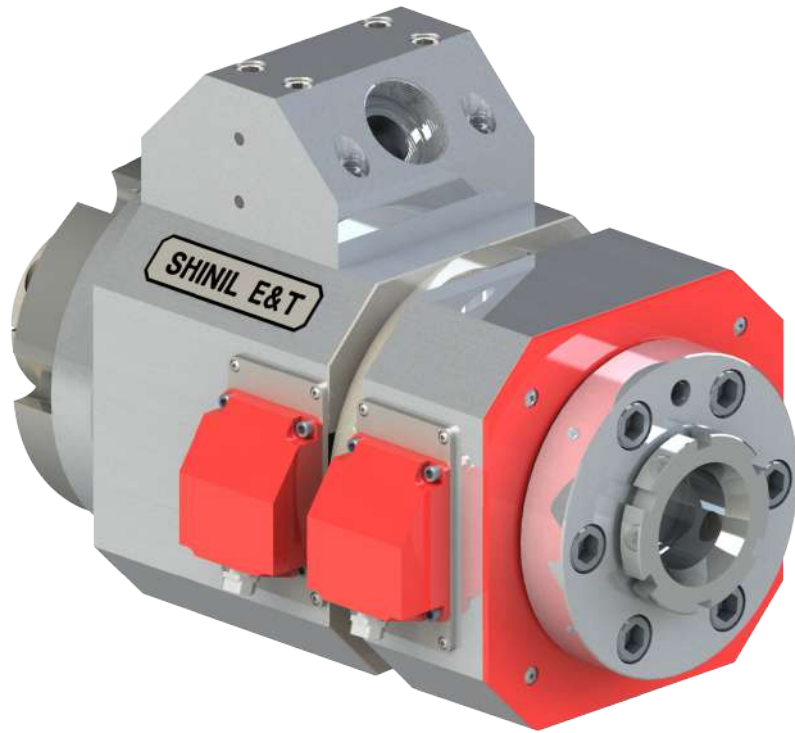
CROSSHEAD SDF-07 MF TLS



APPLICATION	
Foam + Skin	
Skin+ Foam+Skin	
Foam+Skin+ Stripe	
Skin+ Foam+Skin+stripe	

Characteristics	Tools
<ul style="list-style-type: none">•Conductor : Min 0.1 ~ Max 5•Insulation: Max 7mm•Tube die: Max 10mm•Application: Small solid and stranded wires, Telephone wires, Small CATV Cables, Mini coax, Lan cable CAT 6.7.8, Medical tube, Shock tubing•Compound: PVC, PE, PBT, PA, Chemical or Physical foam, PE•Centering: Mflex Fixed centering•Layer: The standard SHINIL skin foam skin crosshead has been modified to allow connection to a 4th small extruder that will apply the stripe. <p>FEATURE & STRENGTH</p> <ul style="list-style-type: none">- Distribution: 3 conical distribution cartridges; mono-flow easy to clean- Uniform and smooth flow, no stress, no shear in the melted compound- With change of front body makes various choice of operation- Gum space: Axial die adjustment <p>OPTION:</p> <ul style="list-style-type: none">- Connection: Connecting flanges any type of extruder- Bypass: Manual / Pneumatic- Breaker plate- Toolings: Hardened steel, Tungsten carbide, Diamond inserted- Accessories: Assembly and disassembly cleaning kit	<p>COMPRESSION</p> <p>SEMI-COMPRESSION</p>

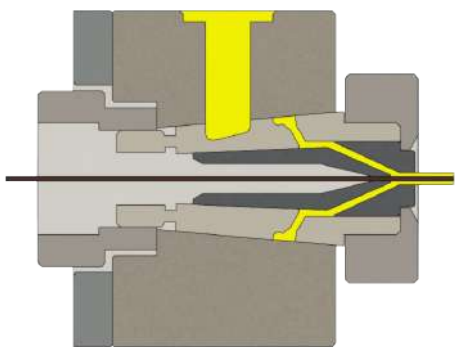
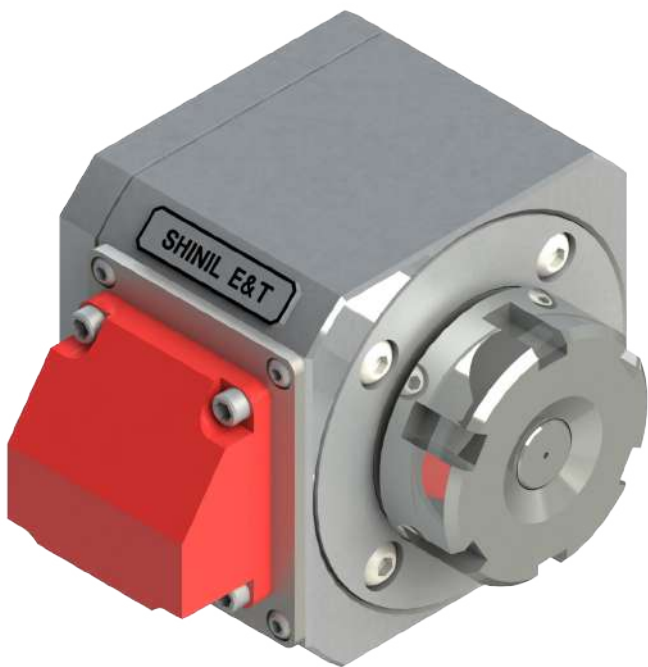
CROSSHEAD SDF-30 DLS



APPLICATION	
Single layer	
Dual layer	
Dual layer +Skin	
Dual layer +Stripe	

Characteristics	Tools
<ul style="list-style-type: none">• Conductor: Min 2 ~ Max 20mm• Insulation: Max 30mm• Tube die: Max 40mm• Insulation: Solid and stranded wire• Application: Filling of building wire, Submarine cable, Jacketing, Energy cable• Compound: PVC, PE, LSZH• Centering: Fixed centering• Layer: Single layer/ Dual layer/Dual layer + Skin or Stripe <p>FEATURE & STRENGTH</p> <ul style="list-style-type: none">- Distribution: 2 Conical type cartridge- Easy to clean- no holes or slots- no dead spots- Constant and smooth compound flow- Gum space: Axial die adjustment <p>OPTION</p> <ul style="list-style-type: none">- Connection: Connecting flanges any type of extruder- Bypass: Manual / Pneumatic- Breaker plate- Toolings: Hardened steel, Tungsten carbide, Diamond inserted- Accessories: Vacuum adapter	<p>SINGLE</p> <p>DUAL</p>

CROSSHEAD SEF

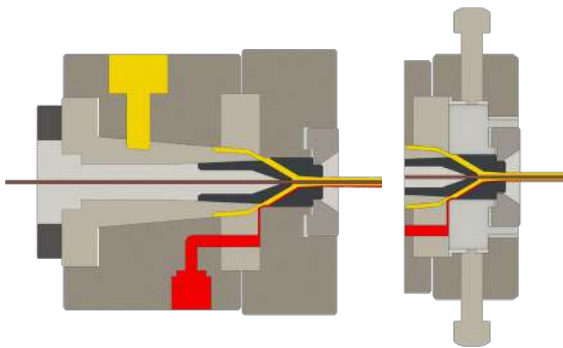


APPLICATION	
Single layer	

Characteristics			
Crosshead size	05	07	14
Min Conductor Ø	0.2	0.2	0.5
Max Conductor Ø	2	5	10
Max Insulation Ø	4	7	14
Max tube die Ø	5	10	18
<ul style="list-style-type: none">•Application: Small solid and standard wire•Compound: PVC, PE, PUR, PA, PBT.•Centering: Fixed centering•Layer: Single layer FEATURE & STRENGTH <ul style="list-style-type: none">- Head's width is small and compact structure- Suitable to products requires small diameter and steel wire coating- Easy to clean and rapid assemble and disassemble with simple structure and fixed center.- Gum space: Axial die adjustment OPTION <ul style="list-style-type: none">- Connection: Connecting flanges any type of extruder- Bypass: Manual / Pneumatic- Breaker plate- Toolings: Hardened steel, Tungsten carbide, Diamond inserted- Accessories: Vacuum adapter			

Tools	
COMPRESSION	
SEMI-COMPRESSION	
TUBE	

CROSSHEAD SHF

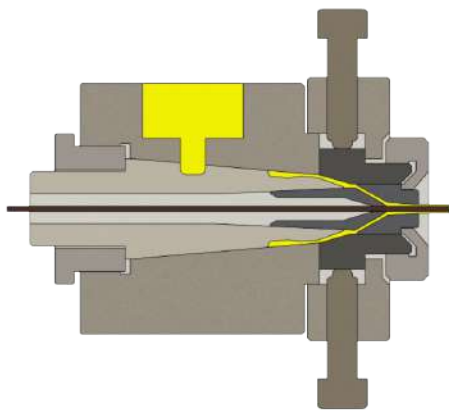


APPLICATION	
Single layer	
Single layer + stripe	

Characteristics				
Crosshead size	07	15	20	28
Min Conductor Ø	0.2	0.2	0.5	3
Max Conductor Ø	5	10	13	22
Max Insulation Ø	7	15	20	28
Max tube die Ø	10	18	22	35
<ul style="list-style-type: none">•Application: Optical fiber, Loose tube, Tight buffer, Zip cord with aramid•Compound: PVC, PE, PBT, PA, LSZH•Centering: Fixed centering / Manual centering•Layer: Single layer / Single layer + Stripe FEATURE & STRENGTH <ul style="list-style-type: none">- Distribution: Conical distribution cartridge- Easy to clean: no holes or shots, no dead spot- Constant and smooth compound flow, no stress and no shear in the melted compound- With change of front body makes various choice of operation- Gum space: Axial die adjustment OPTION <ul style="list-style-type: none">- Connection: Connecting flanges any type of extruder- Bypass: Manual / Pneumatic- Breaker plate- Toolings: Hardened steel, Tungsten carbide, Diamond inserted- Accessories: Jelly provider				

Tools	
COMPRESSION	
SEMI-COMPRESSION	
TUBE	

CROSSHEAD SAM



APPLICATION	
Single layer	

Characteristics					
Crosshead size	07	14	18	30	50
Min Conductor Ø	0.2	0.5	0.5	3	5
Max Conductor Ø	5	10	13	25	45
Max Insulation Ø	7	14	18	30	50
Max tube die Ø	10	18	20	40	60

- **Application:** Automotive wire, Building wire, Jacketing, Data cable Power cable, Tube
- **Compound:** PVC, PE, PUR, PA,
- **Centering:** Manual centering
- **Layer:** Single layer

FEATURE & STRENGTH

- **Distribution:** Conical type cartridge
- Excellent surface roughness and no bump structure can make smooth melted compound flow.
- Easy to clean- No hole or slots, no dead spots
- **Gum space:** Axial die adjustment

OPTION

- **Connection:** Connecting flanges any type of extruder
- **Bypass:** Manual / Pneumatic
- **Breaker plate**
- **Toolings:** Hardened steel, Tungsten carbide, Diamond inserted
- **Accessories:** Vacuum adapter

Tools

COMPRESSION



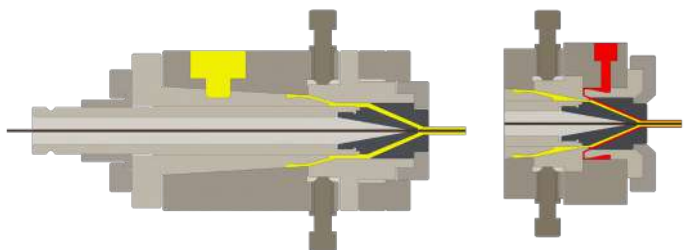
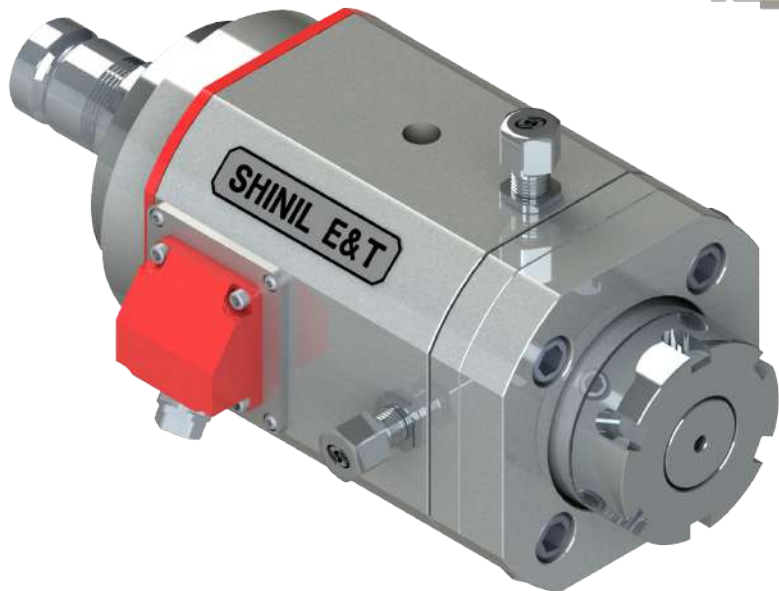
SEMI-COMPRESSION



TUBE



CROSSHEAD SBM



APPLICATION	
Single layer	
Single layer +Skin	
Single layer +Stripe	

Characteristics						
Crosshead size	20	30	40	55	65	80
Min Conductor Ø	2	2	5	5	10	10
Max Conductor Ø	15	25	35	50	60	75
Max Insulation Ø	20	30	40	55	65	80
Max tube die Ø	25	40	50	60	80	100

- **Insulation:** Solid and stranded wires
- **Application:** Jacketing, Building wires, Power cables, CATV cables, Drop cables, Tube
- **Compound:** PVC, PE, PA, LSZH
- **Centering:** Manual centering
- **Layer:** Single layer / Single layer + Skin or Stripe

FEATURE & STRENGTH

- **Distribution:** Conical type cartridge
- Easy to clean- No hole or shots, no dead spots
- Excellent surface roughness and no bump structure can make smooth melted compound flow.
- With change of front body makes various choice of operation
- **Gum space:** Axial wire guide holder adjust at the rear part

OPTION:

- **Connection:** Connecting flanges any type of extruder
- **Bypass:** Manual/Pneumatic
- **Breaker plate**
- **Toolings:** Hardened steel, Tungsten carbide, Diamond inserted
- **Accessories:** Vacuum adapter

Tools

COMPRESSION



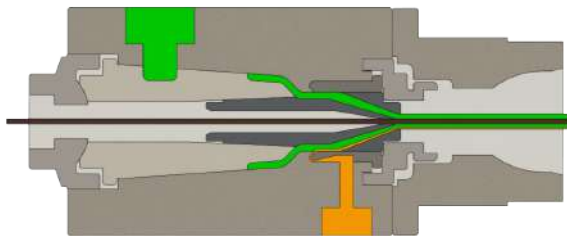
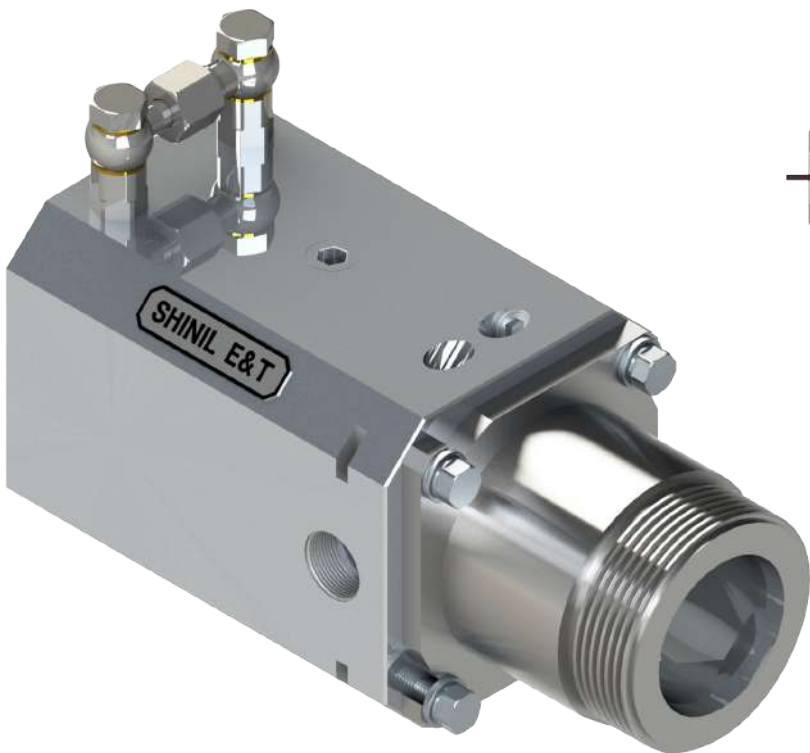
SEMI-COMPRESSION






TUBE

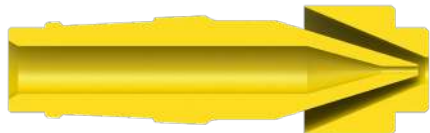


CROSSHEAD SRDF

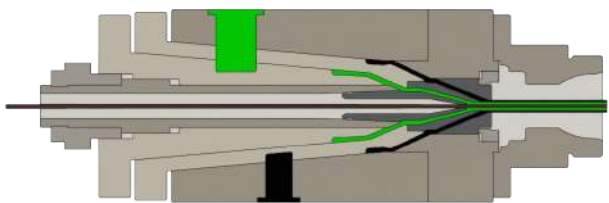




APPLICATION	
Single layer	
Single layer + Skin	
Single layer + Stripe	

Characteristics					
Crosshead size	07	15	18	28	40
Min Conductor Ø	0.2	0.2	0.5	3	3
Max Conductor Ø	5	10	13	22	30
Max Insulation Ø	7	15	18	28	40
Max tube die Ø	10	18	20	35	50
<ul style="list-style-type: none">•Application: Solid & stranded wire, Filling of building wire assembly with reclaimed, CV Lines, Thermoplastic rubber insulated wire, Electronic, Submarine cable•Compound: RUBBER, EVA, SILICONE, XLPE•Centering: Fixed centering,•Layer: Single layer / Single layer + Skin or Stripe•Heating: Water or oil circulation type					
FEATURE & STRENGTH <ul style="list-style-type: none">- Distribution: Conical distribution cartridge- Easy to clean- No hole or shots, no dead spots- Constant and smooth compound flow- No stress and shear in the melted compound- Gum space: Axial die adjustment					
OPTION <ul style="list-style-type: none">- Connection: Connecting flanges any type of extruder- Bypass: Manual / Pneumatic- Breaker plate- Toolings: Hardened steel, Tungsten carbide, Diamond inserted- Accessories: CV Tube front fitting					

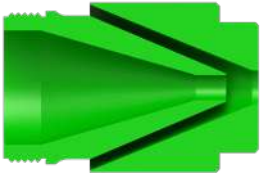
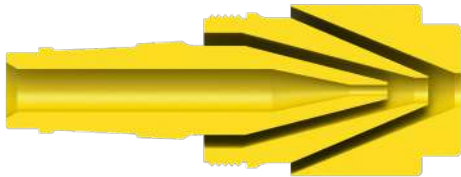


CROSSHEAD SRDF-20 DL TH

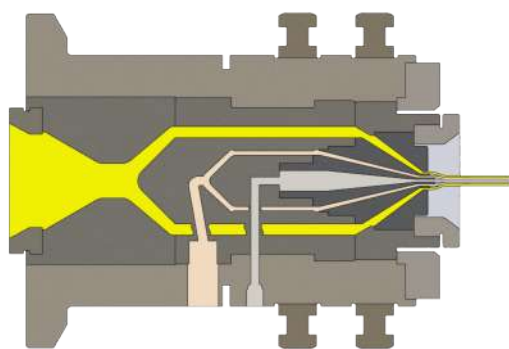


APPLICATION	
Single layer	
Dual layer (filling+sheathing)	

Characteristics
<ul style="list-style-type: none">•Conductor: Min 0.2 ~ Max 12mm•Insulation: Max 16mm•Tube die: Max 20mm•Application: Solid and stranded wires, Filling of building wire assembly with reclaimed, CV Line, Thermoplastic rubber insulated wire, Electronic, Submarine cable.•Compound: Rubber, EVA, Silicone, XLPE•Centering: Fixed centering•Layer: Single layer / Dual layer (Filling+Sheathing)•Heating: Water or oil circulation type
FEATURE & STRENGTH: <ul style="list-style-type: none">- Distribution: 2 conical type cartridge- Easy to clean: No hole or shots, no dead spots- Constant and smooth compound flow no stress and no shear in the melted compound- Gum space: Inner 1st wire guide- move back and forth by adjustment nut, Outer 2nd die- move back and forth by adjustment nut
OPTION: <ul style="list-style-type: none">- Connection: Connecting flanges any type of extruder- Bypass: Manual/Pneumatic- Breaker plate- Toolings: Hardened steel, Tungsten carbide- Accessories: CV tube front fitting

Tools
<div>SINGLE</div> 
<div>DUAL</div> 

STRAIGHT HEAD SSHM

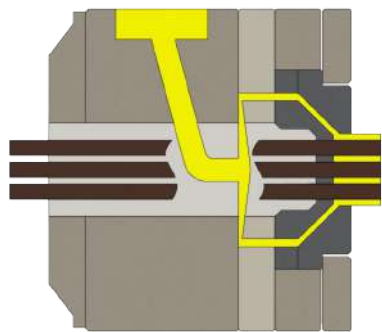
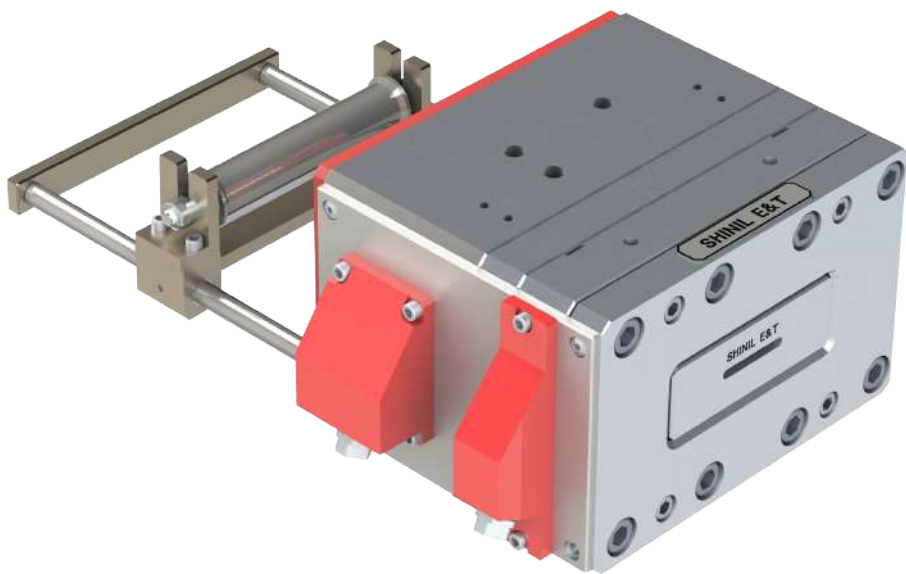


APPLICATION	
Single layer	
Dual layer	

Characteristics				
Model name	SSHM15	SSHM30	SSHM50	SSHM-80
Max tube die Ø	15	30	50	80
<ul style="list-style-type: none">•Application: Air pressure tube, heating tube, Automotive cable, Thermal shrinkage tube, Medical tube•Compound: PVC, PE, PUR, PA, PP, VPDE, EVOH, POF•Centering: Manual centering•Layer: Single layer/ Dual layer <p>FEATURE & STRENGTH</p> <ul style="list-style-type: none">- Suitable to produce for tube production- Possible to array straight line in narrow space.- A wall thickness can be adjusted by adjustment bolt <p>OPTION</p> <ul style="list-style-type: none">- Connection: Connecting flanges any type of extruder- Bypass: Manual / Pneumatic- Breaker plate- Toolings: Hardened steel- Accessories: Vacuum adapter				

Tools
<div>SINGLE</div>
<div>DUAL</div>

FLAT HEAD SFHF

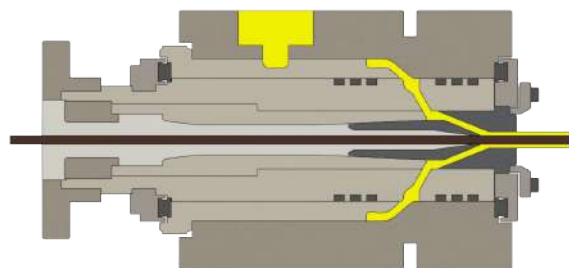
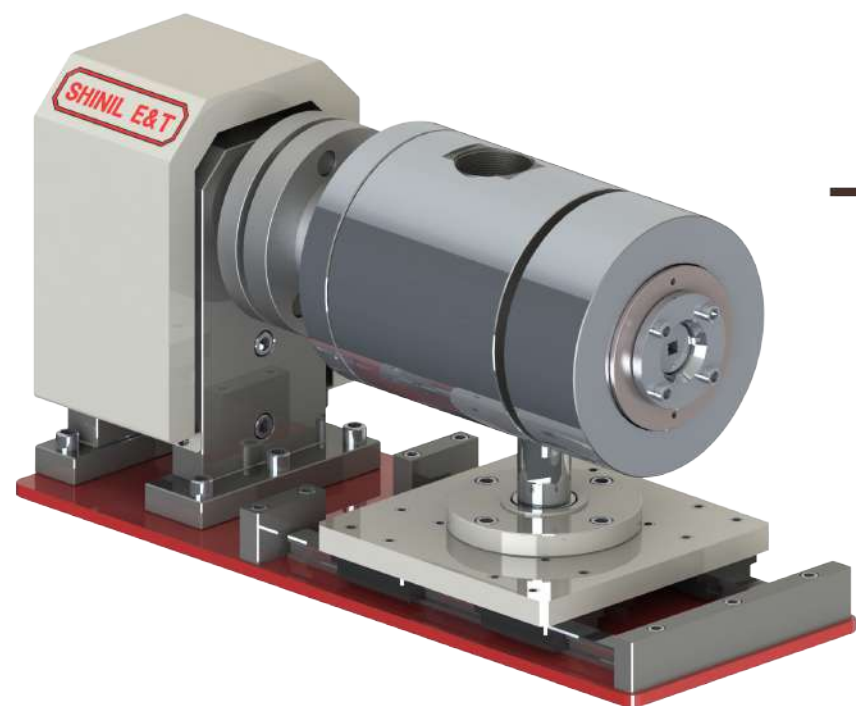


APPLICATION	
Single layer	

Characteristics	
Crosshead Model	Applied size(Width x Height)
SFHP-20	20 x 3
SFHP-60	60 x 5
SFHP-80	80 x 6
SFHP-100	100 x 8
SFHP-120	120 x 13
<ul style="list-style-type: none">•Application: Computer cable, Audio cable, Elevator cable, Wrap band, Boothbar insulation, Flat ribbon cables•Compound: PVC, PE, PUR, PA•Centering: Fixed centering•Layer: Single layer <p>FEATURE & STRENGTH</p> <ul style="list-style-type: none">- Distribution: Automatic balancing of upper and lower flow in the distribution cartridge.- Rapid tooling change, reduce down time- No bump structure in flow channel allows smooth compound flow and easy to clean. <p>OPTION:</p> <ul style="list-style-type: none">- Connection: Connecting flanges any type of extruder- Bypass: Manual/Pneumatic- Breaker plate- Toolings: Hardened steel- Accessories: Wire sorting device- Cross head holder or trolley	

Tools

ROTATING HEAD SRHF

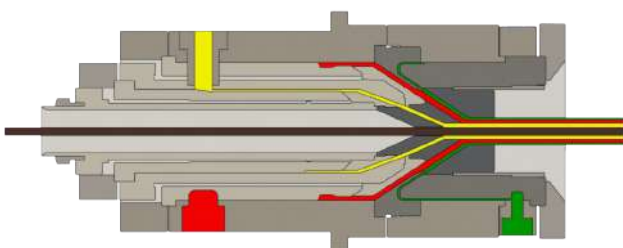
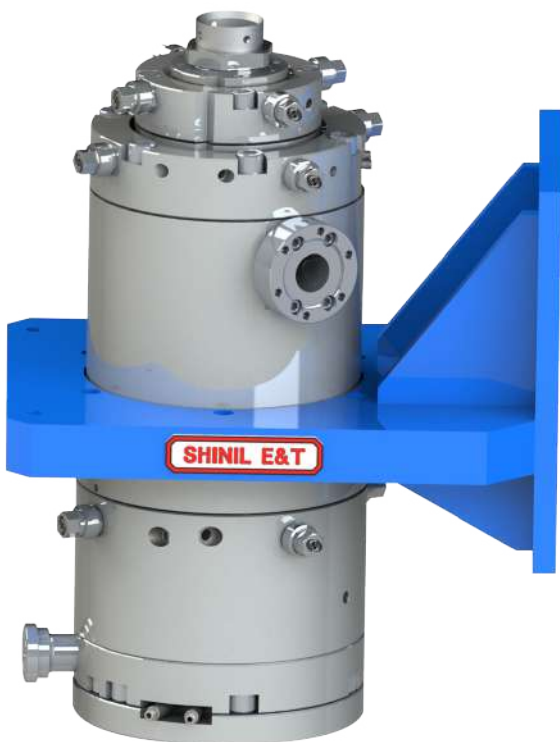


APPLICATION	
Single layer	

Characteristics			
Crosshead size	07	15	20
Min Conductor Ø	0.2	0.2	0.5
Max Conductor Ø	5	10	13
Max Insulation Ø	7	15	20
<ul style="list-style-type: none">•Application: Cross filler, Tube•Compound: PVC, PE, PUR, PA, LSZH•Centering: Fixed centering,•Layer: Single layer•Heating: Body-heating cartridge, Die-band heater <p>FEATURE & STRENGTH</p> <ul style="list-style-type: none">- Let the die rotate at inner side, suitable to produce screw shape groove or bump on the insulator or tube- Resulted in shaped groove improve strength of insulator or tube and more flexible for bending.- Material cost can be saved <p>OPTION</p> <ul style="list-style-type: none">- Connection: Connecting flanges any type of extruder- Bypass: Manual / Pneumatic- Breaker plate- Toolings: Hardened steel			



TRIPLE CROSSHEAD STM

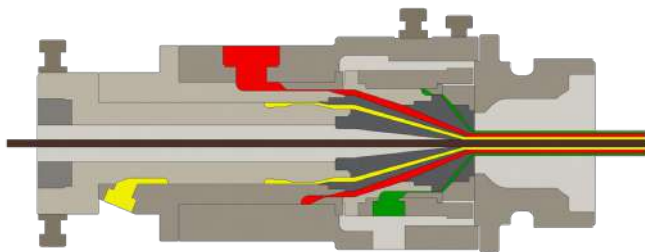


APPLICATION	
Triple layer	

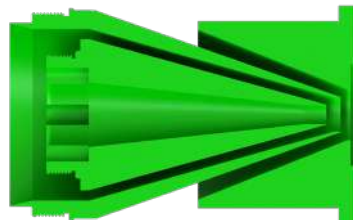
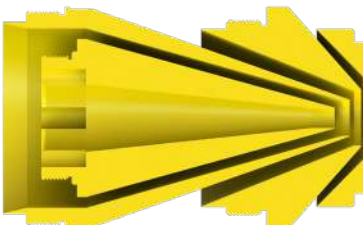
Characteristics				
Crosshead size	STM 35/75	STM 50/90	STM 70/130	STM 70/150
Cable diameter	6~75mm	10~90mm	15~150mm	30~150mm
Inner thickness	0.3~2.0	0.3~2.0	0.4~3.0	0.5~3.0
Insulation thickness	1.0~20	1.0~20	4.0~35	4.0~35
Outer thickness	0.3~2.0	0.3~2.0	0.4~3.0	0.4~3.0
<p>FEATURE& STRENGTH</p> <ul style="list-style-type: none">-The SHINIL triple crosshead STM model can produce triple layers for insulation of XLPE&EPR, Inner&outer layer of semiconductive compound and is employed for MV&HV in catenary lines(CCV) vertical lines(VCV).- Optimized distribution flow channels improved layer thickness tolerances and concentricity- Improved of surface roughness for flow channel and coating result in excellent durability and easy maintenance.- Zero centering to reduce working time makes to install the center and can adjust each layer with centering screw. <p>OPTION:</p> <ul style="list-style-type: none">- Connection: Connecting flanges any type of extruder- Heating: Oil or water circulation+ band heater- Cleaning tool set and trolley- Toolings: Tip & die Hardened steel- Conductor guiding rollers				



TRIPLE CROSSHEAD STH



APPLICATION	
Dual layer	
Triple layer	

Characteristics					Tools
Crosshead size	STH35/75	STH 50/90	STMH70/130	STH 70/150	<div>DUAL</div>  <div>TRIPLE</div> 
Cable diameter	6~75mm	10~90mm	15~150mm	30~150mm	
Inner thickness	0.3~2.0	0.3~2.0	0.4~3.0	0.5~3.0	
Insulation thickness	1.0~20	1.0~20	4.0~35	4.0~35	
Outer thickness	0.3~2.0	0.3~2.0	0.4~3.0	0.4~3.0	
FEATURE & STRENGTH <ul style="list-style-type: none">-The SHINIL triple crosshead STH model can produce triple layers for insulation of XLPE&EPR, Inner&outer layer of semiconductive compound and is employed for MV&HV in catenary lines(CCV) vertical lines(VCV).-Optimized distribution flow channels minimize layer thickness tolerances, thereby saving material-Structure for replacing tools for the shortest time and set temperature-Improved of surface roughness for flow channel and coating result in excellent durability and easy maintenance.					
OPTION: <ul style="list-style-type: none">- Connection part: (Inner, Insulation, Outer) flanges, Breaker plate- Cleaning tool set and trolley: Swinging and turning device- Toolings: Hardened steel, Tungsten carbide, Diamond inserted- Conductor guiding rollers					

EXTRUSION TOOL

Tool은 검증된 원자재 사용부터 완성까지 최고의 설비와 숙련된 기술자에 의하여 생산되며 고정밀도의 품질과 성능으로 전세계에서 높은 평가를 받고 있습니다.

자사의 크로스 헤드용 Tip/Die는 물론 타사의 Tool 제작도 가능합니다.

Tool produced by experienced technician and best equipment with use of proved raw materials, and was evaluated great international with high accuracy of quality and performance.

Of course able to make our company's Tip/Die for cross head, also other company's tool construction.

- 소재에 따른 Tool의 종류** Types of tools by materials

Tip : 열처리된 Steel, 초경, SUS계 + 초경Tip, SUS계 + 다이아몬드Tip, 하스텔로이
 Hardened steel, Tungsten Carbide, SUS + Tungsten Carbide Tip, SUS + Diamond Tip, Hastelloy

Die : 열처리된 Steel, 초경, SUS계 + 초경Tip, 하스텔로이
 Hardened steel, Tungsten Carbide, SUS + Tungsten Carbide Tip, Hastelloy
- Tool의 설계** Designs of tools

신일이엔티(주)의 Tool 설계는 PVC, PE, 불소수지는 물론 성형이 어려운 재료와 형상에 최적화된 디자인을 제공합니다.

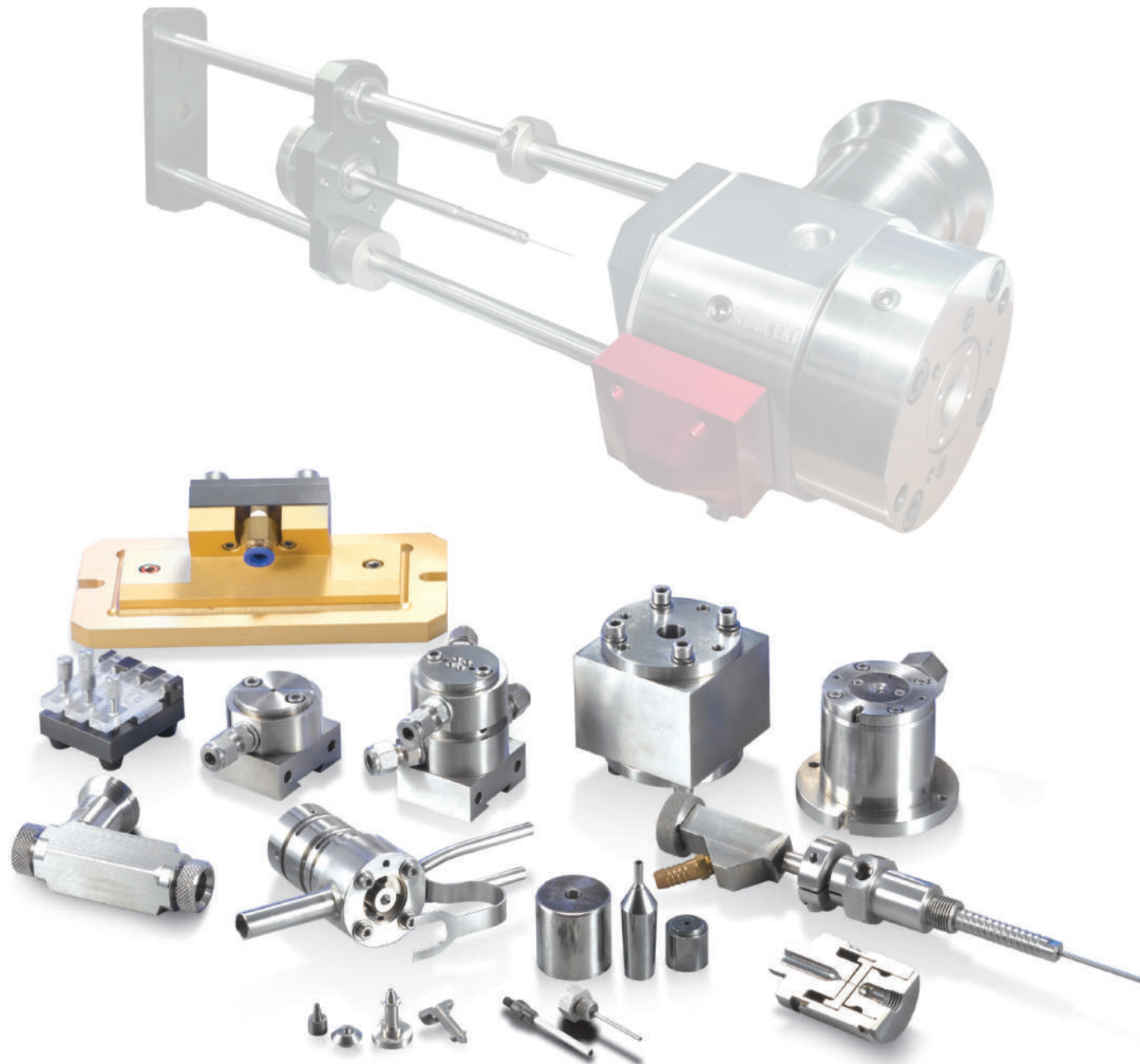
SHINIL E&T tool design provides designs optimized for PVC, PE, Fluoropolymer, also materials hard to shape



OPTICAL FIBER TOOL

광통신 관련 케이블 생산에 필요한 각종 Guide Roller를 비롯하여 Optical Fiber Coating Applicator, Coloring Die, Jelly Filling System, Resin Applicator 등 높은 정밀도를 요구하는 모든 제품의 제작이 가능합니다.

Able to produce things requires high accuracy such as optical fiber coating applicator, coloring die, jelly filling system, resin applicator, including guide roller for making optical communication related cables.



CARTRIDGE

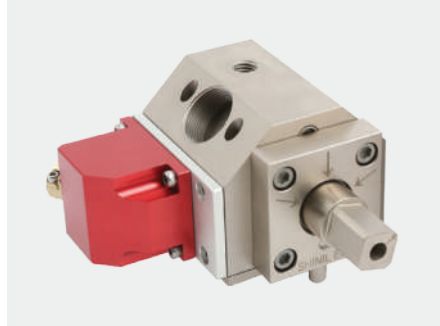
Cartridge는 모델별 표준형 외에 사용조건 및 고객의 요청에 따라 컴퓨터 프로그램에 의한 유동해석과 특수설계로 제작됩니다. Cartridge의 종류는 표준 원료용(PVC 및 PE), 저점성 원료용(폴리아미드 및 폴리우레탄), 고농축 고점성 원료용(할로겐프리 난연재), 고무원료용 그리고 용도에 따라 다이홀더와 Stripe-Skin Holder와 다양한 종류의 금형제작이 가능합니다.

Cartridge is made with customer's request and liquid analysis via computer program other than standard type model. Types of cartridges are standard ingredients (PVC & PE), low-viscosity ingredients (PA&PUR), highly enriched high-viscosity ingredients (Halogen free flame regarding materials), rubber materials, and able to manufacture a various type of mold by use other than die holder and stripe-skin holder.



ACCESSORIES

Cartridge



By-Pass



Air Wiper



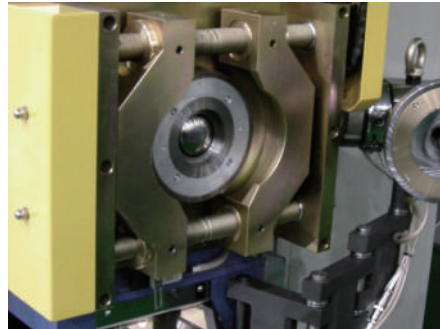
Q.C.C와 By-Pass는 라인생산 중지 없이 빠른 색상교체와 청소, 준비시간 단축 등 소량 다품목 제품의 경우 절실히 요구되는 첨단 시스템으로 원료 스크랩을 최소화 할 수 있습니다. 에어 와이퍼는 전선 피복의 물기제거 용도로서 선속은 Max 300m/min 적용선재는 $\varnothing 0.5\text{mm} \sim \varnothing 30\text{mm}$ 이며 소음방지를 위한 박스형태의 제품도 있습니다

Q.C.C and By-Pass can minimize the material scrap with latest system required by small quantity products, color change, cleaning, shorten preparing time etc without stopping production on line. Air wiper is for removal water on the wire surface and line speed is Max 300m/min, application core size is $\varnothing 0.5\text{mm} \sim \varnothing 30\text{mm}$ and can be chosen box type to protect noise.

Breaker Plate



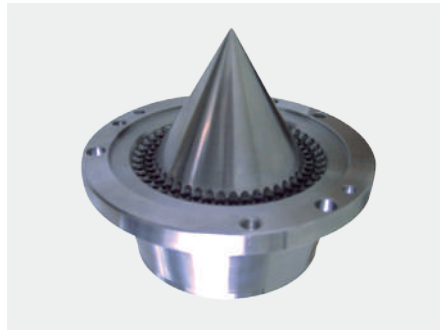
Auto Clamp



Trolley



Strand Pelletizing Dies



Vacuum Holder



Maintenance Tool Box



FACILITIES STATUS

기계 설비 현황

풍부한 경험과 기술력을 바탕으로 고객의 니즈를 분석하고 반영하여 최적화된 제품을 설계하며, 품질수준을 향상시키기위한 성능시험, 내구시험 등을 통해 최상의 제품을 개발하고 있습니다.

We are designing optimized products by analyzing what our customer needs based on our full experience and technology, also developing the best products through endurance tests, efficiency tests to improve the quality.



MAIN SUPPLYING COMPANY

주요 납품업체

고객가치를 존중하는 마음 그리고 환경을 보호하려는 책임감을 가지고 일상적인 청정도 관리 및 인증된 각종 법규를 성실히 이행하고 있으며, 최고의 품질을 유지하기 위해 자사만의 차별화된 품질 SYSTEM을 구축하여 고객만족을 추진하고 있습니다.

We are fulfilling all accredited regulations and usual cleanliness management with respect on value of customers and responsibility to protect the environment, also trying to satisfy our customers by constructing differentiated quality system to retain the best quality.

외 300여개 업체가 함께합니다.
Accompanying with more 300 enterprises besides.

CERTIFICATION STATUS

인증 현황

시장 검증을 통해 입증된 경험과 기술력을 바탕으로 고객의 니즈를 만족하는 제품 실현을 위해 지속적인 연구개발에 집중하고 있으며 최신동향을 반영한 기술혁신과 첨단기술을 선도하는 기업이 되도록 최선의 노력을 다하고 있습니다.

We are focusing on continuous development to fulfill what our customer needs based on proved experienced through market verification and technology, trying our best to become a company leading technology innovation and latest technology.



특허증 Certificate 특허증 Certificate 기업부설연구소 R&D Center 부품소재전문기업 Parts Specialized Company 강소기업 Small Hidden Company



ISO9001 ISO9001 ISO14001 ISO14001



벤처기업확인서 Venture Company 수출유망중소기업인증서 Promising Export SME Confirmation INNO-BIZ 유망중소기업인증서 Promising SME in Gyeonggi-Do

MEMO



THINK PRIDE

SHINIL E&T Pursue Perfect Quality, Best Service.